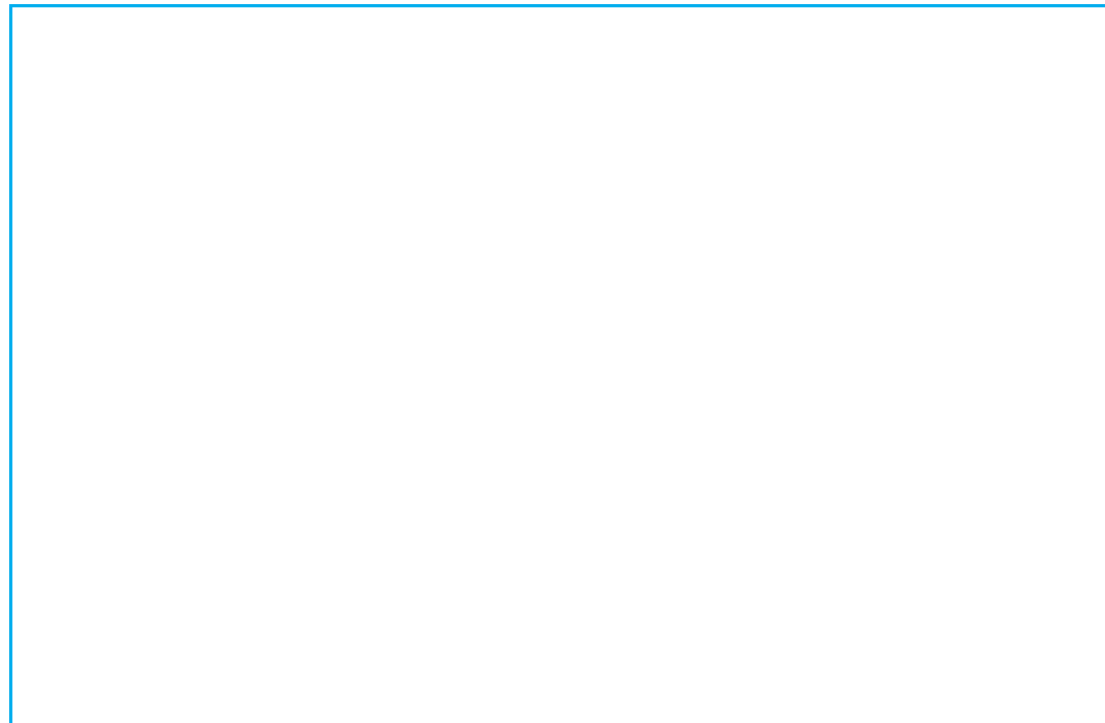




AQUATEST™
water technology solutions



AQUATEST™
water technology solutions

AQUA HIVE
MINE WATER MONITORING SERVICE



SMART MINES - SMART MONITORING



AQUATEST™
water technology solutions

AQUAHIVE

MINE WATER MONITORING SERVICE

Developed for Mine Water Management

Purpose-built on years of research and development, the origin of the Aquahive can be traced back to the need for, and lack of, rugged remote monitoring systems for mine sites. Trial by fire collaboration with mining professionals in its development has produced a system to precisely address the needs of modern mines.

Quality Data in Real-Time

The sensor agnostic hardware of the Aquahive allows for the use of world class sensors, old or new. Common parameters utilized include: level, flow, temperature, conductivity, dissolved oxygen, pH/ORP, pressure, ammonium, chloride, TSS, nitrate and salinity. The event detection module analyzes the data stream in real time to automatically issue commands and proactively prevent incidents.

Professional Design. Professional Support.

Research, production, and programming of the Aquahive is executed completely in our Canadian facility. This allows us to provide our customers with the highest technological standards, rapid deployment, complete system design, and the best technical support.

Total Coverage and Understanding

The Internet of Things (IoT) offers a new era of solutions for effective mine water management. Total site coverage is obtained by networking sensors, and understanding of site dynamics comes from the centralized data visualization and alerts. Cloud based, the Aquahive centralized data platform comes with you wherever you go.

APPLICATIONS

Streams, Tailings ponds, Ground water, Storm water, Industrial water, Dam monitoring, Weather, Snow level

BENEFITS

1. Custom built-in reporting to facilitate environmental compliance and long-term planning
2. Consistent, efficient monitoring with reduced operational costs
3. Increased worker safety
4. Customized deployments with minimum assembly required
5. Site wide coverage and visualization with all stations in a centralized interface
6. Remote management and troubleshooting of sensors
7. Professional support from the manufacturer
8. Rugged, off-grid renewable energy supplied via solar panels and wind turbines.

Weatherproof enclosure with a battery guaranteed for extreme low temperature operation (-40°C)



AQUATEST™
water technology solutions

AQUAHIVE

MINE WATER MONITORING SERVICE



WIND TURBINE

SOLAR PANEL

ADDITIONAL POWER MODULE

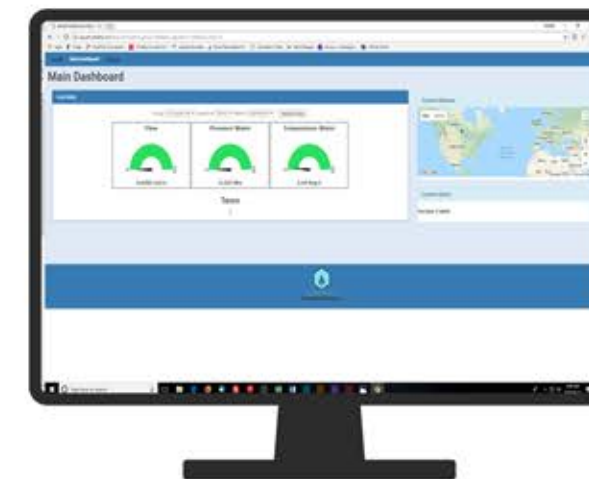
AQUA HIVE TERMINAL

PONTOON DEPLOYMENT

Hardware Features:

1. Satellite, cellular, or radio telemetry.
2. Connect up to 25 sensors*
3. Weatherproof enclosure and extreme temperature operation (-40°C to 50°C)
4. Standard 20-watt solar panel (larger solar panels and wind turbine available)
5. Encrypted military grade SLC-NAND flash storage
6. Power management and self diagnostic system
7. LCD display and keypad for local programming
8. Standard interfacing through USB or Ethernet
9. Auxiliary systems connection (e.g. process control, alarm, etc)

*Networking box may be required for connecting multiple sensors



Software Features:

1. Easy export to mine water management software
2. Integrated data analysis tools
3. Centralized data aggregation and visualization of all stations
4. Intuitive map for accurate location of systems and making sense of data
5. User defined alarms with multiple levels, criteria, and addressees
6. Secure cloud storage, accessible from anywhere